

2011 to 2014



SaferPeterborough Partnership Plan



The partnership plan

Government requires the SaferPeterborough partnership to produce a **partnership plan** that identifies the areas it prioritises action each year.

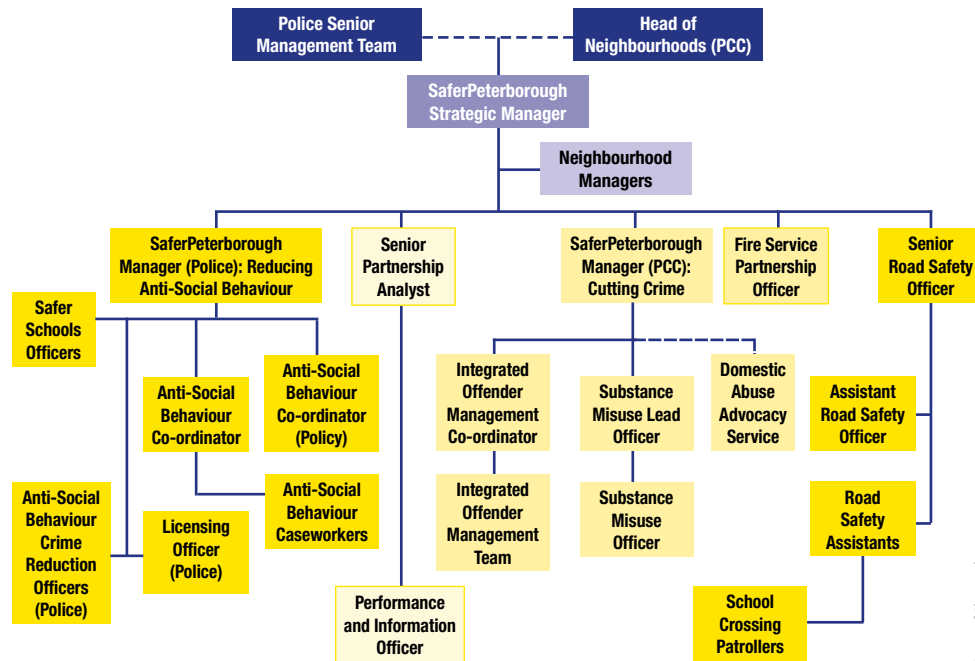
The plan spans a three-year period and is updated annually to reflect findings from strategic assessments that paint a picture of crime, disorder and safety in our neighbourhoods.

The plan supports **The Greater Peterborough Partnership (GPP) sustainable community strategy**, which sets out the direction for the overall

strategic development of Peterborough, resulting in a single delivery plan.

Visit www.saferpeterborough.org.uk to view the partnership plan in full or call **(01733) 747474** and ask for the SaferPeterborough team who will post the plan to you.

The SaferPeterborough team



Front cover bottom right photo courtesy of theposh.com

SaferPeterborough is a community safety partnership made up of local organisations who work together to reduce crime and the fear of crime in Peterborough.

The partnership is responsible for making our city a safer place to live, work and visit. Its vision is to empower neighbourhoods to help cut crime and reduce anti-social behaviour, which will create and sustain strong and supportive communities.

The SaferPeterborough team is responsible for delivery of this vision and is structured to focus on three priority areas:

- Reducing crime
- Tackling anti-social behaviour and hate crime
- Building stronger and more supportive communities

These priorities cover nine themes that concern communities the most:

- Anti-social behaviour
- Arson
- Domestic abuse
- Hate crime
- Road safety
- Serious acquisitive crime
- Serious sexual offences
- Substance misuse
- Violent crime

Partnership organisations



The SaferPeterborough partnership brings together **responsible authorities** who, under Section 17 of the Crime and Disorder Act 1998, have a duty to consider the community safety implications of their actions.

The responsible authorities are:

- Peterborough City Council
- Cambridgeshire Constabulary
- Cambridgeshire and Peterborough Fire Authority
- NHS Peterborough
- Cambridgeshire Police Authority
- Cambridgeshire and Peterborough Probation Trust

Co-operating authorities are local groups or organisations that contribute significantly to community safety. The Crime and Disorder Act makes co-operating bodies key partners in the setting and delivery of objectives. Co-operating authorities provide information to improve the understanding of local crime and disorder problems, thereby benefiting the core functions of the partnership.

Cross Keys Homes (representing registered social landlords) is a co-operating authority of the partnership.

SaferPeterborough also invites other organisations to assist in the delivery of crime reduction activities. These are known as **invitees to participate**. This provides an opportunity for the voluntary sector to support the work of the partnership.

Invitees to participate are:

- HMP Peterborough
- Peterborough Racial Equality Council
- Peterborough Mediation (representing the voluntary sector)
- The Social Impact Bond



Achievements: April 2010 to March 2011

From April 2010 to March 2011 crime in Peterborough reduced by 10 per cent.

We have:

- Strengthened and co-located police and city council community safety teams
- Targeted 200 known burglars (Operation Alert)

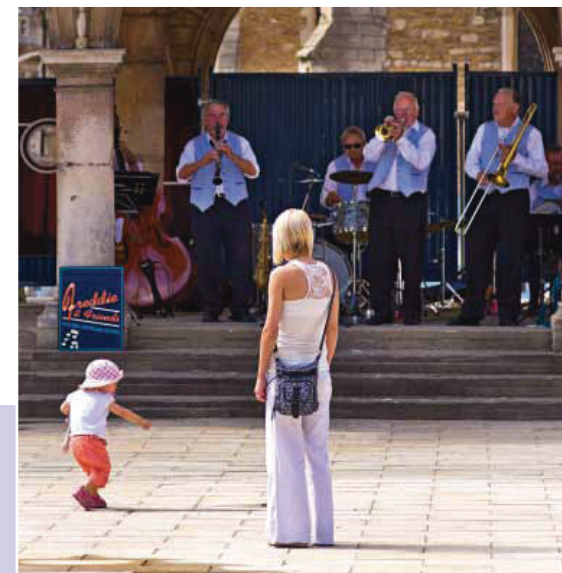
- Remodeled our prolific and priority offender programme into an integrated offender management programme
- Declared our intent to deal with the causes as well as symptoms of crime through a revised three-year partnership plan

Reduction of crime types

	From April 2009 to March 2010	From April 2010 to March 2011	Numeric change	Change
Serious acquisitive crime	3,926	3,054	-872	- 22.2%
Theft / unauthorised taking of a vehicle	424	313	-111	- 26.2%
Violent crime	4,657	4,591	-66	- 1.4%
Serious sexual offences	252	237	-15	- 6.0%

The results are:

- **27 per cent reduction** in reported burglary. A financial saving to the city of **£1,212,428** (Economic and Social Cost of Crime - Home Office research paper)
- **26 per cent reduction** in acts of criminal damage (1,126 fewer). A financial saving to the city of **£977,714**
- **18 per cent reduction** of victim-based crime. Approximately **2,200** fewer victims of crime
- **25 per cent fewer** incidents of racially aggravated crime



Crime reduction by areas

	April 2009 - March 2010	April 2010 - March 2011	Reduction
North West	3,942	3,265	- 17.2%
North East	2,968	2,289	- 22.9%
South West	1,989	1,792	- 9.9%
South East	2,960	2,939	- 0.7%
East North	2,901	2,506	- 13.6%
East South	1,733	1,568	- 9.5%
Central - City Centre	3,243	3,154	- 2.7%
Central - Central North	1,565	1,559	- 0.4%

Some challenges remain despite crime levels having fallen across the city.

- The level of acquisitive crime is underpinned by a group of offenders who regularly re-offend
- A significant level of reported violent crime is domestic abuse
- Communities remain concerned about the levels of anti-social behaviour they experience

Delivery of priority areas

Reducing crime

The most effective way to reduce crime in partnership is to tackle those most disproportionately responsible for the bulk of that crime. National figures have revealed approximately 10 per cent of offenders are responsible for up to 50 per cent of crime.

A major reason for a reduction in crime in Peterborough is the partnership-led **integrated offender management** initiative. This initiative encourages:

- Partners to tackle offenders together
- Delivery of a local response to local problems
- Offenders to face their responsibility, or face the consequences
- Making better use of existing (and proven) programmes and governance
- Easy accessibility to high risk offenders who cause serious harm and /or re-offend

This approach is strengthened further by a national pilot - a **social impact bond**, which is a contract with the public sector in which it commits to pay for improved social outcomes. The Peterborough pilot is funded by investment raised through a social impact bond. A number of organisations deliver intervention work under the **One Service** brand to 3,000 short-sentenced men released from HMP Peterborough.

This approach offers released prisoners the opportunity to change their lives by focusing on the causes of their offending behaviour across a range of tried and tested pathways to reduce re-offending.

Integrated offender management links up with other areas of work within the city to make longer-term change a realistic prospect. These include the **family recovery project**, **safer schools**, the **drug interventions programme**, the development of a city-wide approach to **anti-social behaviour** and the harm caused by **alcohol misuse**.

Mental health

The partnership acknowledges the role mental health plays as an overarching theme and we continue to ensure it is embedded across our priority areas. We will work to recommendations of Lord Bradley's report: 'review of people with mental health problems or learning disabilities in the criminal justice system.'



Safeguarding vulnerable adults

Linking with the Peterborough **adult safeguarding board** ensures any policy or legislation changes impact on the wider community safety agenda. This joint approach will help protect those most vulnerable within our communities.

Tackling anti-social behaviour and hate crime

The partnership's anti-social behaviour team focuses on providing support for victims. Reports of incidents have been steadily increasing and this reflects an increase in the public's confidence in the team's ability to resolve anti-social behaviour issues.

In more than 65 per cent of cases where a perpetrator is warned about their behaviour, the anti-social behaviour stops. The majority (95 per cent) of signed acceptable behaviour contracts (ABCs) prevent further acts of anti-social behaviour occurring.

Hate crime reporting data is analysed by the partnership and reporting is encouraged via the police, a third party reporting scheme, Peterborough Racial Equality Council, Cross Keys Homes and Crimestoppers.

An independent case review group ensures those organisations with responsibility for tackling hate crime are doing so in the most effective way possible.

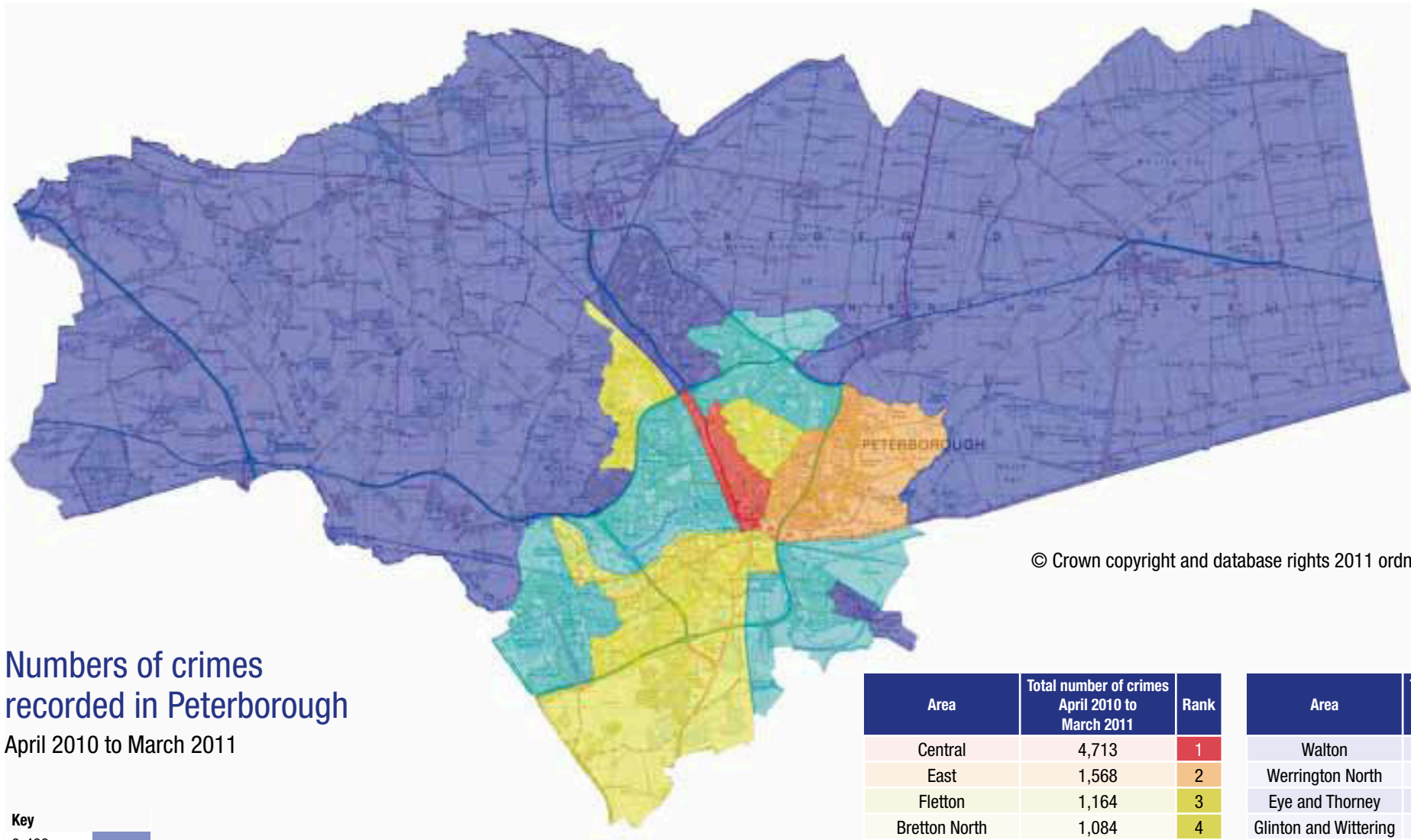
Transformation of neighbourhood delivery

The city council's **neighbourhood management** approach is designed to resolve root causes of issues affecting a community.

We want to ensure communities have the opportunity - and are empowered - to action and influence services and change in their local neighbourhoods through **community action plans**.

Neighbourhood committees have a key role in developing and monitoring the implementation of community action plans.

Police neighbourhood panels and parish councils are strengthened with the growth of neighbourhood committees.








© Crown copyright and database rights 2011 ordnance survey 100024236

Numbers of crimes recorded in Peterborough

April 2010 to March 2011

Key

0-499	
500-999	
1000-1499	
1500-1999	
2000 plus	

Area	Total number of crimes April 2010 to March 2011	Rank
Central	4,713	1
East	1,568	2
Fletton	1,164	3
Bretton North	1,084	4
Orton with Hampton	1,063	5
Orton Longueville	1,016	6
Park	1,000	7
Ravensthorpe	932	8
Dogsthorpe	893	9
Orton Waterville	776	10
West	723	11
Paston	696	12
North	613	13
Stanground Central	599	14

Area	Total number of crimes April 2010 to March 2011	Rank
Walton	451	15
Werrington North	410	16
Eye and Thorney	365	17
Glinton and Wittering	265	18
Werrington South	238	19
Bretton South	141	20
Newborough	129	21
Stanground East	113	22
Barnack	70	23
Northborough	50	24

Other areas of focus

While our three priority areas cover a wide range of the city's safety issues, work continues across other themes to ensure we continue to reduce crime.

Road safety

The partnership's road safety priority is the combination of education, engineering, enforcement and encouragement activities focused on reducing the number of road traffic casualties.

Over the last 10 years the number of people killed and seriously injured on Peterborough roads has reduced by 40 per cent. The road safety action plan prioritises areas of work with young drivers, speeding, motorcyclists, drink and drug driving, in-car safety and young people.

In 2010 more than 1,000 young people took part in road safety programmes delivered by the partnership.

The road safety task and finish group runs under the authority of the Cambridgeshire and Peterborough Road Safety Partnership, which is responsible for the delivery of road safety across Peterborough and Cambridgeshire.



Community cohesion and population change

Each area of priority has undergone an equalities impact assessment to ensure the work we are doing considers the impact of our migrant communities and the needs of vulnerable groups.

Preventing violent extremism is addressed by a cohesion board that reports to **The Greater Peterborough Partnership**. The chair of the cohesion board and its lead officer have a seat on the SaferPeterborough partnership board.

Victims and witnesses

The needs of victims and witnesses are vital in all the work the partnership undertakes. A key area of activity is to ensure communities receive feedback about the outcome of prosecutions in their area.

Working with the Cambridgeshire and Peterborough Probation Trust has enabled **Community Payback** to be more visible, which demonstrates justice is not only being done but it is seen to be done.

Performance

A monthly SaferPeterborough partnership performance meeting is responsible for monitoring progress against our priorities and reporting to the SaferPeterborough board.



“Over the last 10 years the number of people killed and seriously injured on Peterborough roads has reduced by 40 per cent.”

Partnership board

The SaferPeterborough partnership board fulfils the duties of a crime and disorder reduction partnership (CDRP) as set out within the Crime and Disorder Act.

The Police and Crime Act 2009 extends these responsibilities to include a duty to implement a strategy to reduce re-offending by adult and young offenders.

The board provides strategic direction for the work of the partnership by:

- Assessing the needs within the area
- Overseeing planning and strategy
- Establishing performance targets
- Clearing blockages to performance
- Resource management
- Compliance with the national guidance in relation to crime, drugs and anti-social behaviour
- Commission of drug treatment services

Task and finish groups

Task and finish groups exist for the key priority areas of partnership business. Each group has a theme lead who is responsible for delivering on their business area and producing an action plan.

The purpose of task and finish groups is to:

- Use intelligence-led problem solving to develop action plans that facilitate performance against the partnership plan
- Monitor performance against targets within the partnership plan
- Identify funding to deliver agreed action plans
- Form sub-groups where necessary for a distinct area of business
- Identify areas of success and use these to influence the work of other task and finish groups

Domestic abuse and sexual assault

Crime statistics and research show domestic abuse is heavily gender biased. Usually the perpetrator of a pattern of repeated assaults is male, while women experience the most serious physical and repeated assaults.

The SaferPeterborough partnership also recognises:

- Men can be victims of domestic abuse
- Women can perpetrate domestic abuse
- Domestic abuse can take place in gay, lesbian, bisexual and transgender relationships

The partnership therefore aims to support anyone affected by domestic abuse.

Rape is associated with the most severe cases of domestic abuse and is a risk factor for domestic homicide. The partnership continues to support the work of the **Oasis @ Rivergate** (sexual assault referral centre) and maintain links with the police-led county-wide multi-agency referral unit.

Have your say

The partnership is committed to ensuring any member of our community can access information about the partnership plan.

We want to know what you have to say about the partnership's priorities and how we deliver them. There are a number of ways you can talk to us.

Visit our website www.saferpeterborough.org.uk and feedback to us by clicking the 'Have Your Say' button on every page.

Come to Face the People consultation events

We are at the Peterborough Festival (Central Park) and Christmas lights switch-on events. High-ranking decision makers from the partnership attend these events and talk to you about crime and community safety concerns in your neighbourhoods, what you would like to see improved and what priorities you think we should focus on.

You can view Face the People consultation results on www.saferpeterborough.org.uk or call (01733) 747474 and ask for the SaferPeterborough team, who will send you a copy.

Neighbourhood panel meetings

You can have your say on policing where you live and issues that need tackling in your neighbourhood so that action can be taken.

Police are at these quarterly meetings and are joined by representatives from the partnership who help shape policing priorities for the area.

Three priorities are chosen at the meetings for the neighbourhood policing team to tackle over a period of three months.

For details of your next panel meeting visit www.cambs.police.uk.

Neighbourhood Watch

Neighbourhood Watch is a community initiative supported by the police but owned and run by local residents.

It aims to help residents protect themselves and their property from crime by improving home security, greater vigilance, reporting of suspicious incidents to police and by fostering a community spirit.

All watch schemes are different and are tailored to the make-up of the neighbourhood and local community.

For information call your neighbourhood policing team on 0345 456 456 4.



The SaferPeterborough partnership is working with the One Service to support short-sentenced male prisoners through and beyond the prison gate by offering proactive and one-to-one support to address their needs and prevent re-offending.

The One Service is funded by social investment raised through a **social impact bond**. The bond was announced by the justice secretary and is an innovative way to bring new money into the social sector.

A social impact bond raises private investment to pay for services, which are delivered by social sector providers with a proven track record. Financial returns to investors are funded by the Ministry of Justice and are based on improved social outcomes. If outcomes do not improve, then investors will receive no recompense.

The social impact bond in Peterborough funds organisations working to reduce re-offending rates of short-sentence male prisoners leaving HMP Peterborough.

The One Service is located at: Hayward House, Rightwell East, Bretton Centre, Bretton, Peterborough, PE3 8DX.



Victim Support offers free and confidential help to victims of crime and you do not have to report a crime to the police to get its help. Victim Support is not a government agency or part of the police.

A witness service operates in every criminal court to help people called as witnesses.

The Victim Supportline (0845 30 30 900) gives immediate help over the phone and will put you in touch with the local team.



Are you worried about what might happen to you if you talk to the police about a crime? Or are you scared to come forward and be a witness?

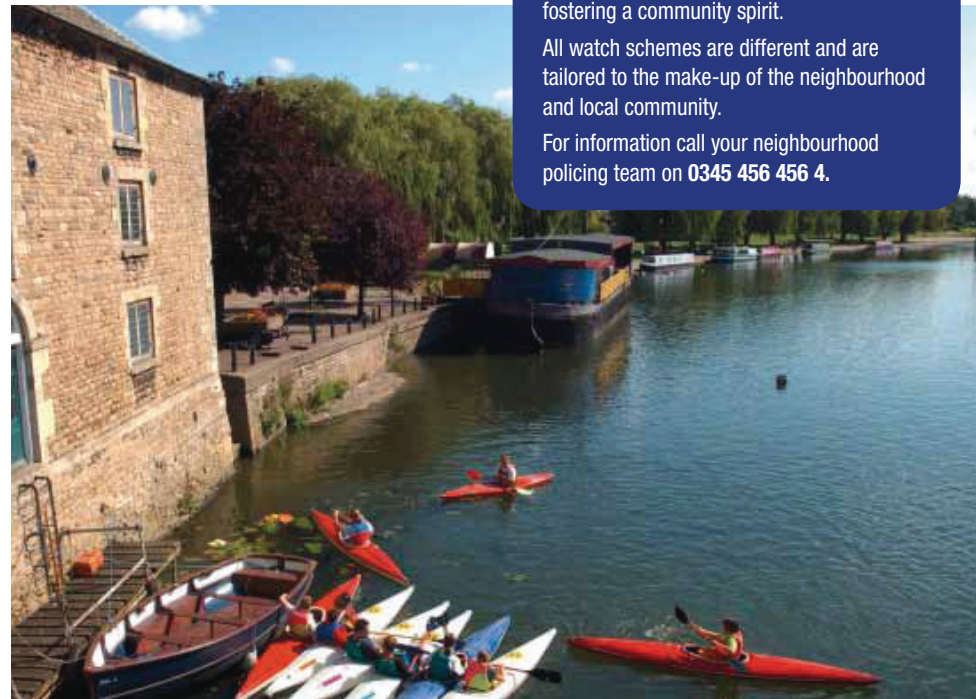
You can pass on information to Crimestoppers without revealing your identity.

- Crimestoppers records no personal details about you
- You will not be required to give your name or address
- Your call will not be recorded or traced
- You will not have to make a statement or appear in court

Crimestoppers is not an emergency service and if you see a crime taking place you should call 999 to report it immediately.

To give information anonymously to Crimestoppers call 0800 555 111.

Visit www.crimestoppers-uk.org or www.fearless.org



Neighbourhood management

Neighbourhood management is designed to improve joint delivery of services from different organisations representing the SaferPeterborough partnership to our communities.

The aim is to tailor delivery to the needs and priorities of individual neighbourhoods and make a local team responsible for ensuring those improvements and change are delivered.

It requires effective participation by local people and organisations committed to working in partnership at a neighbourhood level.

There are three neighbourhood managers who cover the city in three areas:

- Central and East team
- South team
- North and West team

Each manager is supported by teams of officers within the city council neighbourhood services department whose roles include housing enforcement, environmental enforcement and pollution control.

Neighbourhood managers also support the seven neighbourhood committees.

Neighbourhood committees

Neighbourhood committees (previously called neighbourhood councils) are made up of elected city council members along with representatives from parish councils, Cambridgeshire Constabulary, Cambridgeshire and Peterborough Fire Authority, registered social landlords and members of local community groups.

The quarterly meetings represent a way of delegating decision-making to local areas, enabling communities to have a say about issues and how services are delivered in their area.

Community action plans that include identified priorities and actions to address the needs of each community are created for each committee.

The long-term effectiveness of neighbourhood committees relies on the number of residents attending them. The committees provide an opportunity for people to influence and shape their neighbourhoods.



For details of the next neighbourhood committee in your area, call **(01733) 747474** and ask for the neighbourhood management team or email **neighbourhoods@peterborough.gov.uk**

The seven neighbourhood committees are:

Rural North - Northborough, Barnack, Glington and Wittering, Newborough and Eye and Thorney wards

Peterborough North - Werrington north, and Werrington south, plus Paston and Walton wards

Peterborough West - Bretton north and Bretton south, plus West and Ravensthorpe wards

Central and North - Central and North wards

Dogsthorpe, East and Park - Dogsthorpe, East and Park wards

Fletton, Stanground and Woodston - Stanground Central, Stanground East, and Fletton and Woodston wards

Ortons with Hampton - Orton with Hampton, Orton Longueville and Orton Waterville wards



THE GREATER PETERBOROUGH PARTNERSHIP

The Greater Peterborough Partnership (GPP) is the body that unites the many and varied organisations involved in the future development of Peterborough to enable them to work together with a common purpose and a shared vision: a bigger and better Peterborough.

Partners working through The Greater Peterborough Partnership share a common goal to improve the quality of life in our communities and ensure everyone benefits from growth and opportunities.

To support this vision the partners have identified the following four areas of work as part of a **sustainable community strategy**, which are being prioritised in order to achieve the vision:

1. **Creating opportunities - tackling inequalities**
2. **Creating strong and supportive communities**
3. **Creating the UK's environment capital**
4. **Delivering substantial and truly sustainable growth**

The SaferPeterborough partnership is committed to supporting these priorities and with particular focus on the **creating strong and supportive communities** vision. This priority has been created with the below deliverable outcomes:

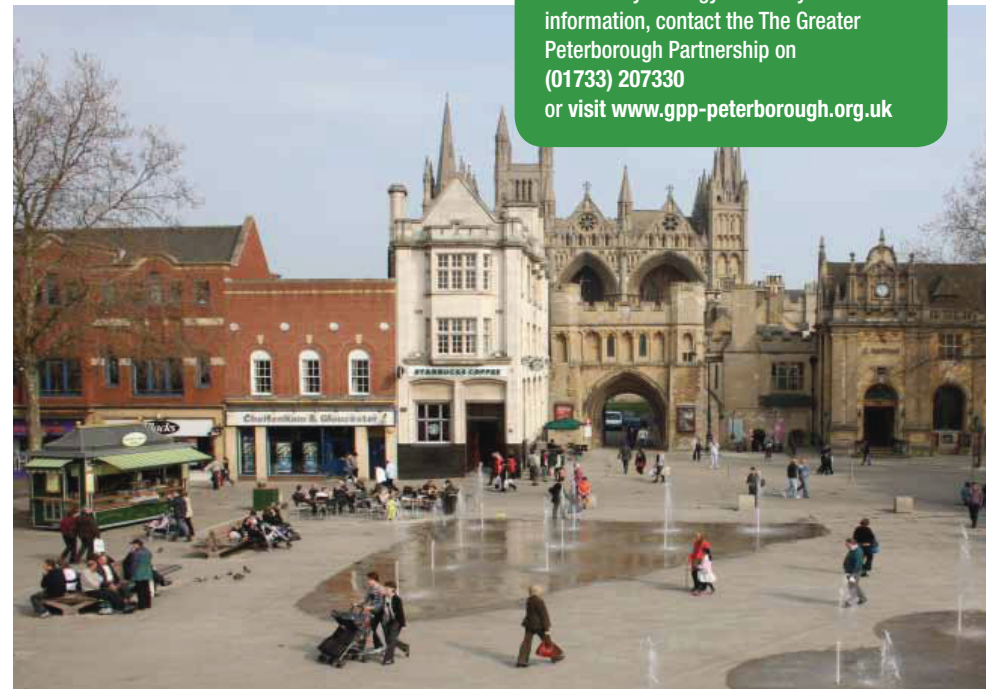
Empowering local communities...so that all communities and individuals are engaged and empowered and take their opportunities to shape the future of Peterborough.

Making Peterborough safer...so that people of all ages and abilities can live, work and play in a prosperous and successful Peterborough without undue fear of crime.

Building community cohesion...so that new communities are integrated into Peterborough and welcomed for the contribution they bring to our city and rural areas.

Building pride in Peterborough...so that we recognise, celebrate and take pride in Peterborough's achievements, its diverse but shared culture and the exciting opportunities for leisure and relaxation.

To view a copy of the sustainable community strategy summary or for more information, contact the The Greater Peterborough Partnership on **(01733) 207330** or visit **www.gpp-peterborough.org.uk**





If you have difficulty in understanding this booklet, we can arrange for it to be explained to you by an interpreter. Please call **(01733) 747474** and ask for the **SaferPeterborough partnership.**

This page is intentionally left blank